

SD Memory Card
Formatting Software

Instruction Manual

February 27, 2006

Matsushita Electric Industrial Co., Ltd.

Table of Contents

1. Introduction	1
2. System Requirements	1
3. Installation	1
4. Uninstallation	1
5. Operation Guide	2
5.1 Window Description	2
5.1.1 Main Window	2
5.1.2 Format Option Window	3
5.2 Startup Operation	5
5.3 Format Operation	5
5.4 Option Select Operation	7
5.5 Refresh Operation	9
5.6 Notes	10
5.7 Copyright	10

1. Introduction

This software formats SD Memory Cards using a formatting program that complies with the SD Memory Card Specification. SD formatting provides quick and easy access to the SD Memory Card.

Note: Generally, SD Memory Card file systems formatted with generic operating system formatting software do not comply with the SD Memory Card Specification.

If you have formatted SD Memory Card with generic operating system formatting software, reformat SD Memory Card using this software or the appropriate formatting software prepared by the SD hosts provider.

2. System Requirements

- OS: Windows 98 Second Edition, Windows Millennium Edition, Windows 2000 Professional, Windows XP (Home Edition/Professional)
- Interface: USB reader/writer, PC card adapter, or SD slot that can read and write SD Memory Card

Note: Some interfaces cannot use this software.

3. Installation

- (1) Close all program applications.
- (2) Execute the installer file. Install the SD Memory Card Formatting Software following the instructions of the installation window.
- (3) Click on [Completion].

Note: If you have already installed this software, it will be uninstalled once automatically while you execute operation (2). In this case, install again from the operation (2) after completing the uninstallation.

4. Uninstallation

[Windows XP]

- (1) Click on [Start], point to [Settings], and click on [Control Panel].
If you cannot find [Settings] and/or [Control Panel] from [Start] menu, click on [Start], and then click on [My Computer]. Click on [Change a setting] or [Control Panel] that exists on the left side of my computer window.
- (2) Click on [Add or Remove Programs].
- (3) Select "SDFormatter" and click on [Change/Remove].
- (4) Uninstall the SD Memory Card Formatting Software following the instructions of the uninstallation window.
- (5) Click on [Completion].

[Other Windows OS]

- (1) Click on [Start], point to [Settings], and click on [Control Panel].
- (2) Click on [Add/Remove Programs].

- (3) Select "SDFormatter" and click on [Change/Remove].
- (4) Uninstall the SD Memory Card Formatting Software following the instructions of the uninstallation window.
- (5) Click on [Completion].

5. Operation Guide

5.1 Window Description

5.1.1 Main Window

After the SD Memory Card Formatting Software is started up, the following main window is displayed on the screen. SD formatting is executed by click on the format button of this window.

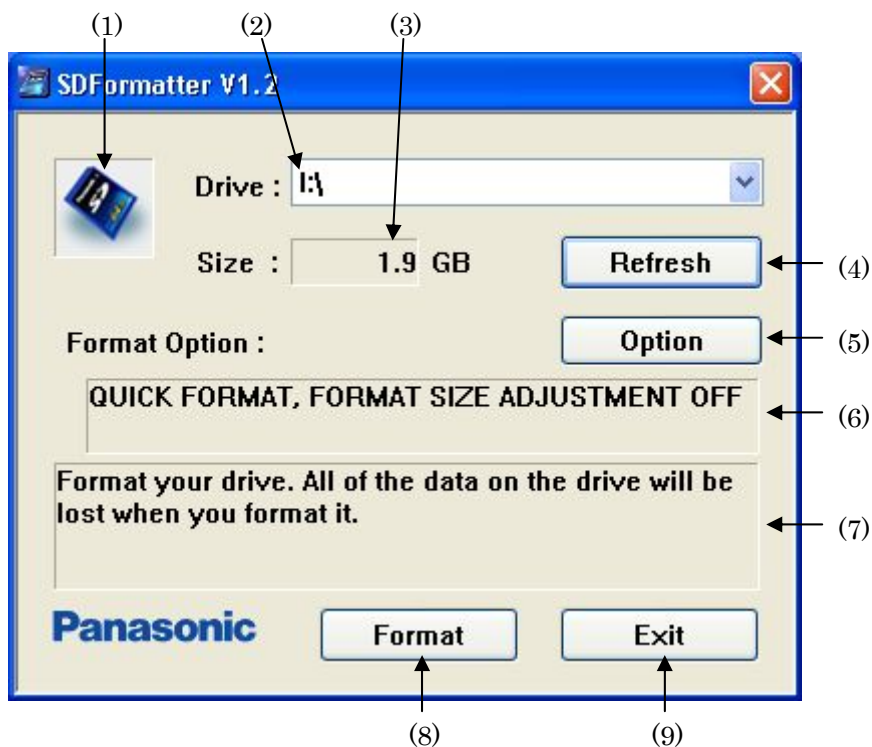


Figure1: Main Window

(1) Status

This field indicates the status of the SD Memory Card and its adapter.

- Blue : They are normal.
- Red : At least, one of them is disabled.
- Gray : They are disabled. This might indicate that no SD Memory Card was recognized by this software.

(2) Drive

This list indicates drive letters corresponding to SD Memory Card drives. This list is used for the selection of the target drive.

(3) Size

This field indicates the capacity of SD Memory Card.

(4) Refresh button

This button is used to update the information about the SD Memory Card drives. When this button is clicked, this software gets the latest information about the SD Memory Card drives. This button may be used after new SD Memory Card is inserted in any adapter.

(5) Option button

This button is used to select some options of format operation. When this button is clicked, the format option window is displayed on the screen. This window is used for selection of some options. For details about the format option window, see the following section.

(6) Format Option Indication

This area indicates the current format option.

(7) Message Area

This area indicates some instructions for users.

(8) Format button

This button is used to execute the format operation.

(9) Exit button

This button is used to terminate this software.

5.1.2 Format Option Window

When option button is clicked, the following format option window is displayed on the screen. By using this window, some options of format operation can be selected.

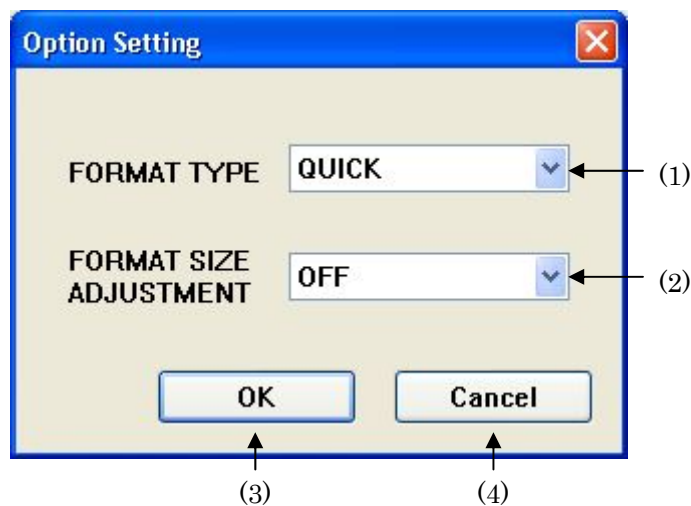


Figure2: Format Option Window

(1) Format Type

This list is used to select user data deletion option.

QUICK:

This software executes the quick format. In this case, this software initializes file system metadata only.

FULL (Erase OFF):

This software executes the full format. In this case, this software initializes file system metadata and completely deletes all user data recorded in the SD Memory Card. The deletion is executed by writing initial data to whole area of the card. Therefore, it may take long time to format.

FULL (Erase ON):

This software executes the full format. In this case, this software initializes file system metadata and completely deletes all user data recorded in the SD Memory Card. The deletion is executed by writing initial data to whole area of the card. Moreover, "erase operation" is executed for whole area of the card if possible. Therefore, it may take long time to format.

* "QUICK" is selected for the default.

* Some adapters don't support "erase operation". If "FULL (Erase ON)" is selected with these adapters, "erase operation" isn't executed. In this case, "FULL (Erase ON)" and "FULL (Erase OFF)" become the same meaning.

(2) Format Size Adjustment

If the formatted capacity of the SD Memory Card is not the multiple size of specific unit size, called "cylinder", some hosts cannot access it successfully. This function adjusts format size to multiple size of cylinder. By reformatting using this function, some hosts may become possible to access it successfully.

OFF:

This software doesn't adjust the format size. Usually, this option should be selected.

ON:

This software adjusts the format size to the multiple size of cylinder. In this case, the formatted capacity may become smaller than before.

* "OFF" is selected for the default.

* This function is supported for the specific users who encountered some troubles depending on the formatted size. If you don't have any troubles about it, you don't need to use this function.

* In case of Windows 98 Second Edition and Windows Millennium Edition environment, data stored in the area outside of partition may not delete completely.

(3) OK button

This button is used to reflect the selected option. When this button is clicked, this software reflects the selected option and deletes this window.

(4) Cancel button

This button is used to cancel the option selection. When this button is clicked, this software cancels the option selection and deletes this window.

5.2 Startup Operation

- (1) Close all program applications.
- (2) Insert SD Memory Card into adapter.
- (3) Click on [Start], point to [All Programs] -> [Panasonic] -> [SD Formatter VX.X], and click on [SD Formatter VX.X].

* "X.X" means the version number of SD Memory Card Formatting Software.

- (4) The main window is displayed on the screen.

5.3 Format Operation

- (1) Select the target drive by drive list and check SD Memory Card size.
- (2) Click on [Format].

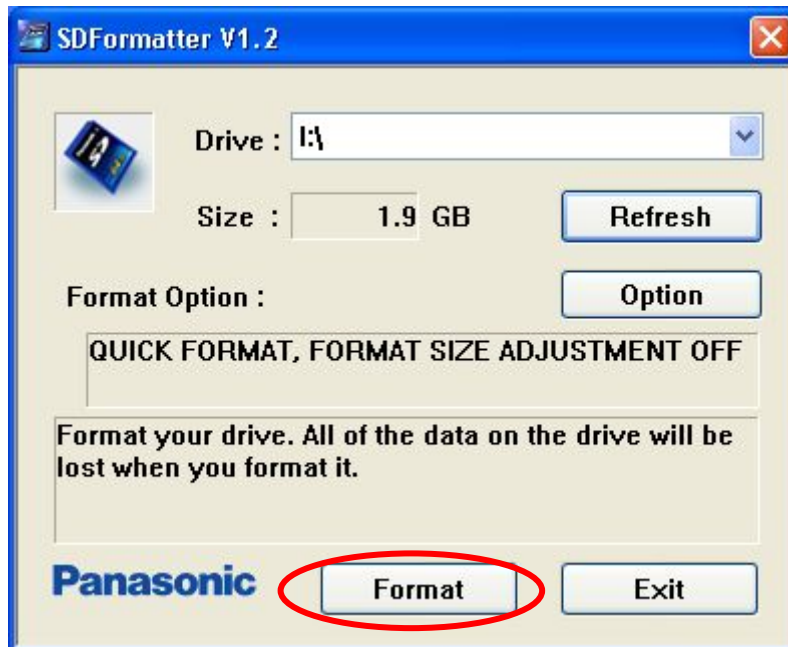


Figure3: Main Window

- (3) After clicking on it, confirmation window is displayed on the screen. Here, if [OK] is clicked, this software executes the format operation. On the contrary, if [Cancel] is clicked, this software cancels the format operation and returns to the main window.



Figure4: Confirmation Window

(4) The following status window is displayed on the screen during the format operation.

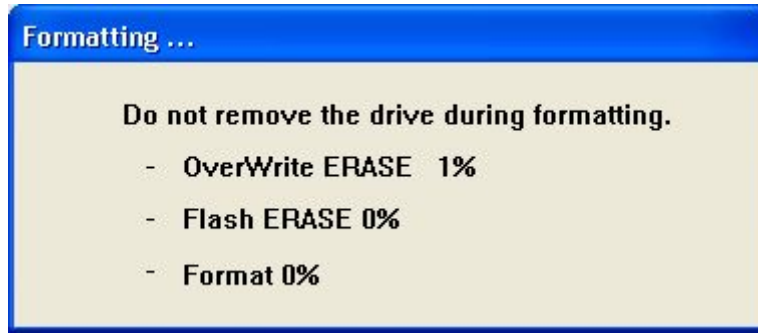


Figure5: Status Window

(5) After the format operation completion, the following window is displayed on the screen. When [OK] is clicked, this software deletes this window and returns to the main window.

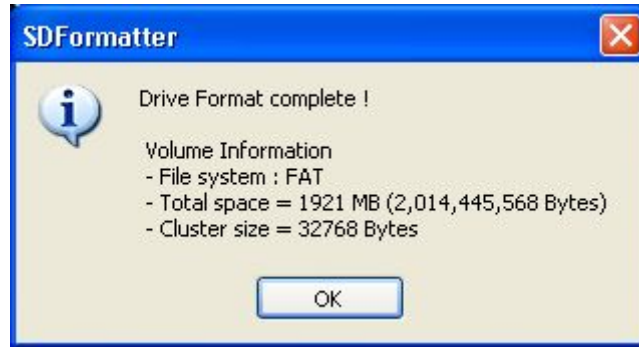


Figure6: Format Completion Window 1

Note: The following window may be displayed after the format operation completion. In this case, please remove and reinsert SD Memory Card from your PC.



Figure7: Format Completion Window 2

5.4 Option Select Operation

(1) Click on [Option].



Figure8: Main Window (before option selection)

(2) After clicking on it, format option window is displayed on the screen. Here, select the format type option and format size adjustment option. After this selection, if [OK] is clicked, this software reflects the selected options and returns to the main window. On the contrary, if [Cancel] is clicked, this software cancels the option selection and returns to the main window.

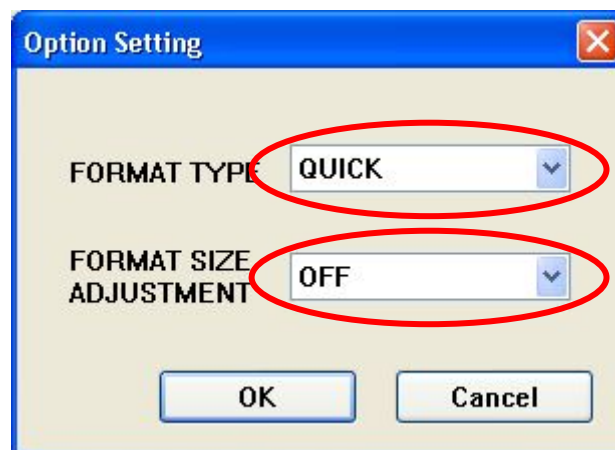


Figure9: Format Option Window (before option selection)

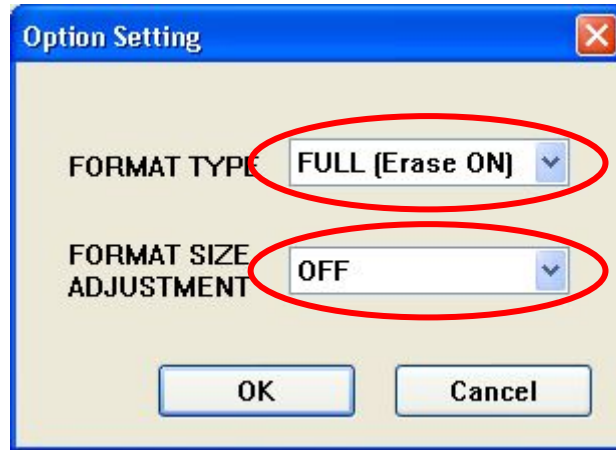


Figure10: Format Option Window (after option selection)

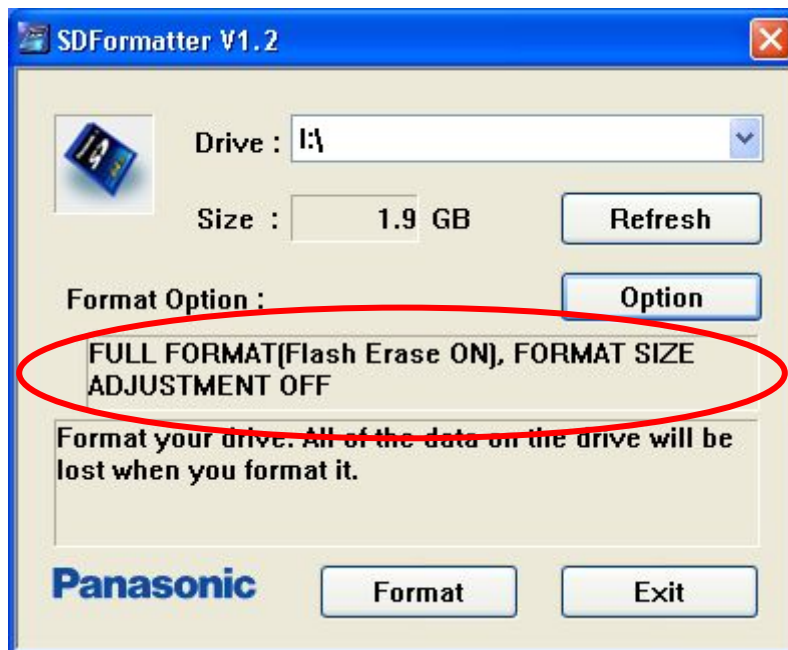


Figure11: Main Window (after option selection)

5.5 Refresh Operation

- (1) If no SD Memory Card is inserted in any adapters, the status field on the main window indicates gray and both drive field and size field don't indicate any.

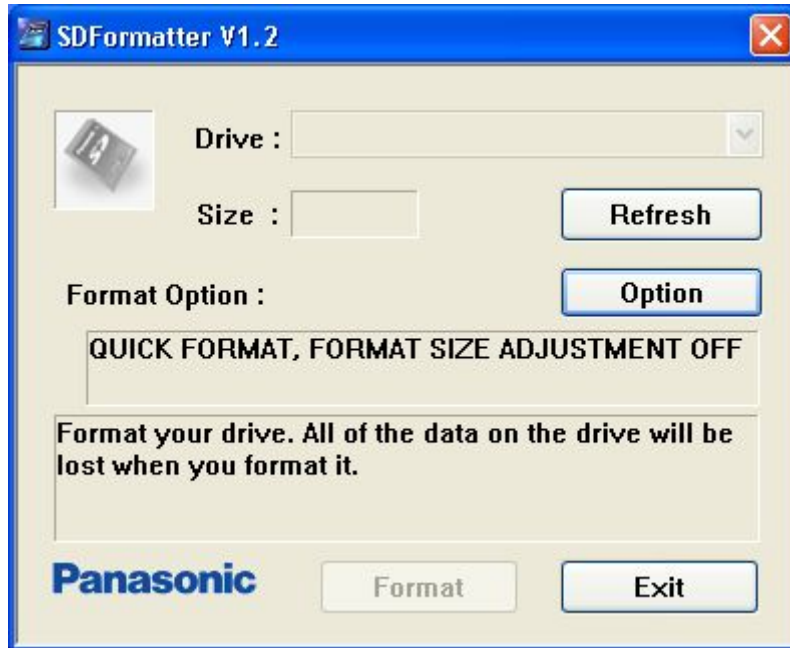


Figure12: Main Window (before refresh)

- (2) After inserting SD Memory Card in some adapters, click [Refresh] on the main window. After click on it, this software gets the latest information about the SD Memory Card drives and shows some information.

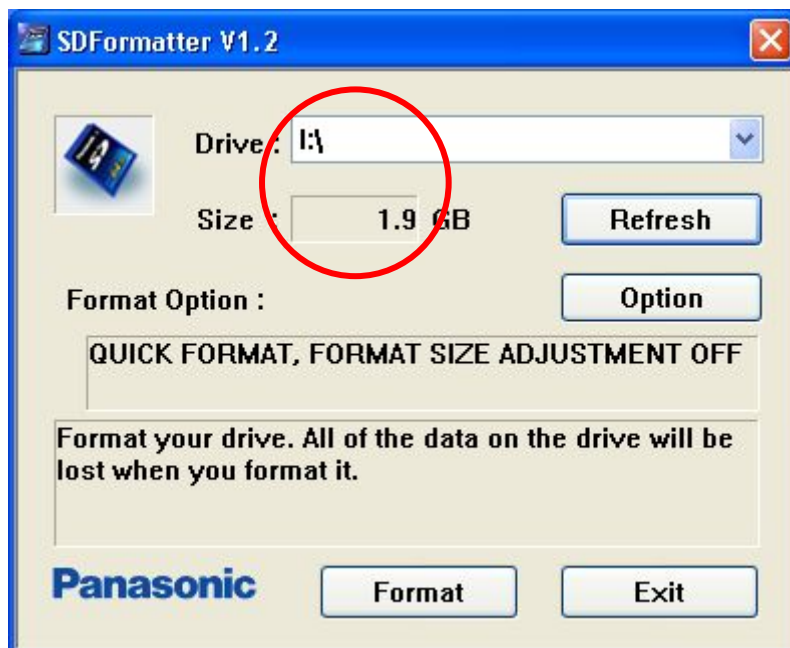


Figure13: Main Window (after refresh)

5.6 Notes

- Do not format recordable media other than SD Memory Cards using this software.
- Do not remove the SD Memory Card while formatting.
- Once formatting has started, all previously recorded data will be erased.
- Do not format the SD Memory Card while the write protection switch is on.
- If the SD formatting software does not recognize the SD Memory Card, re-insert the card and click on "Refresh".
- SD formatting is not possible on unrecognizable "removable drives".
- If you have mistakenly formatted a recordable media other than the SD Memory Card, reformat the media using the appropriate formatting software that came with the media.
- Cannot be used on a Macintosh system.
- This software does not cope with the copyright protection. If you use a card for some equipment with copyright protection such as SD Audio Player, the formatting must be done by the specific formatting software prepared by the equipment provider.
- In some cases SD Memory Cards may not be recognized by the SD formatting software immediately after installation of a SD Memory Card compatible interface equipment device driver. If this occurs, re-start your computer and try again.
- If you are using a USB drive and the SD formatting software does not recognize the SD Memory Card even after re-inserting it, remove the USB cable while the SD Memory Card is still inserted in the drive and after about 10 seconds reconnect the USB cable and click on the "Refresh" button.
- Some interfaces cannot use "erase operation".
- Even if "FULL" format option is selected, data stored in the area outside of partition and in the substitute area of SD Memory Card may not delete completely.

5.7 Copyright

Copyright (C) Matsushita Electric Industrial Co., Ltd. 2001-2006

Microsoft and Windows are either registered trademarks or trademarks of Microsoft Corporation in the United States and/or other countries.

Other mentioned product names and company names are trademarks or registered trademarks.